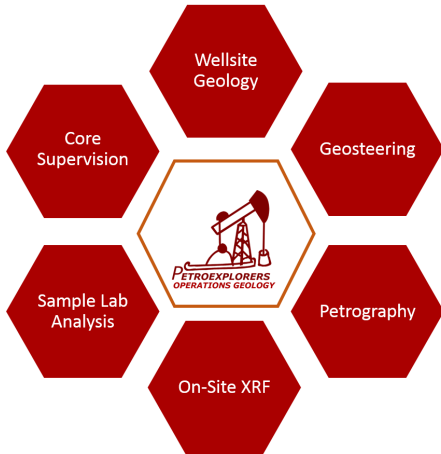
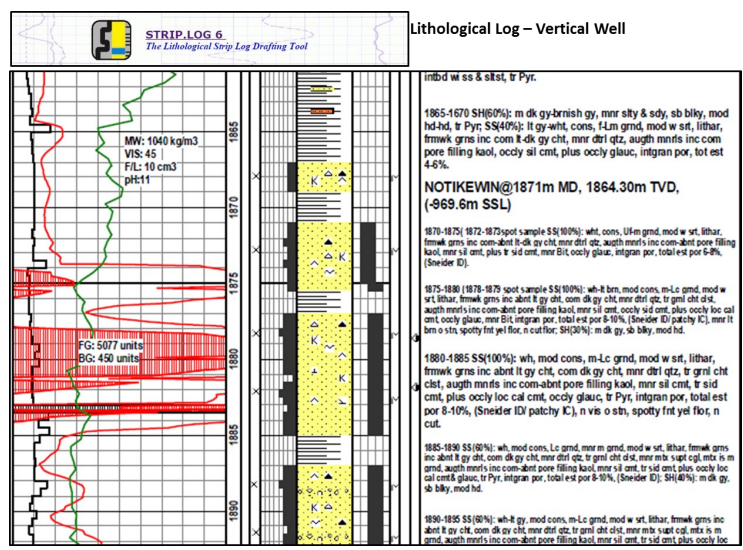


OPERATIONS GEOLOGY DIVISION

Operation Geology Division

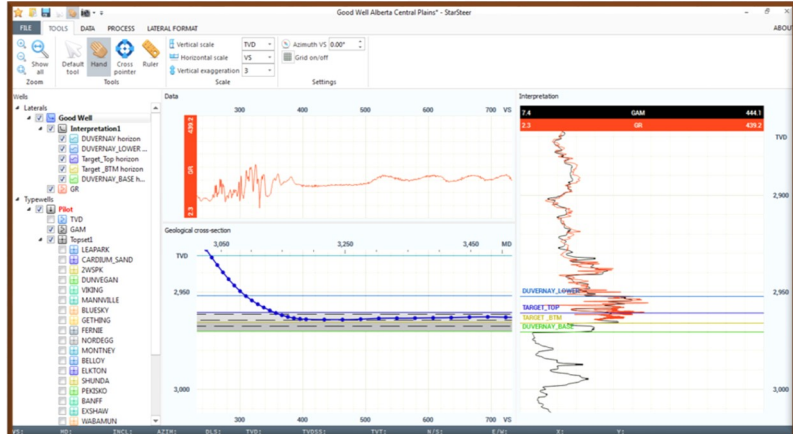
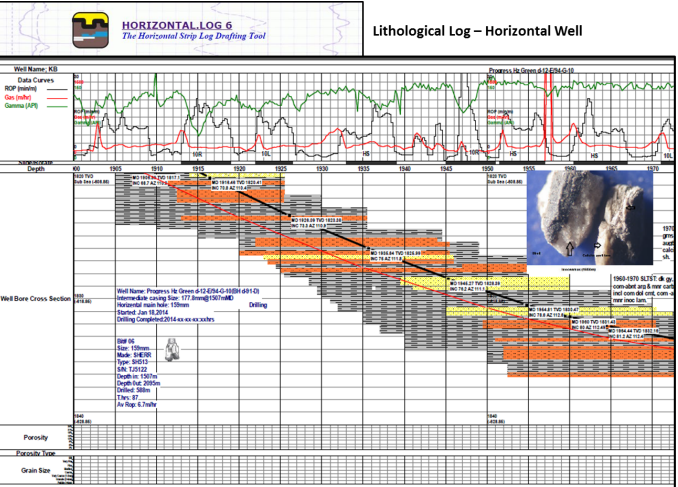
Wellsite Geological Supervision

- Drill cuttings examination and interpretation
- Wireline logging supervision
- Directional Drilling (MWD & LWD)
- Gas detector/chromatograph
- On-site and remote Geosteering services
- Regulatory samples
- Timely updates
- Daily and Final well reports
- Delineate structural features
- Optimum well placement and well path with remote geosteering
- Post-drill analysis and integration



Geosteering

Petro-Explorers team uses leading edge Geosteering software to provide the on-site and remote geosteering services



Fluid Sample collection & XRF Analyses

- Collect tube-ends samples and log lithology
- Detection of major, minor and trace elements
- Chemical logging, chemical geosteering and normative mineralogy

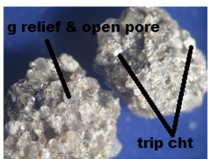


Innov-x 5000 XRF

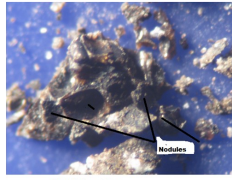
- Mud gas and mud samples – detects isotopes for hydrocarbon characterization
- Gas detector/chromatograph monitoring
- Hydrocarbon shows evaluation
- Label and supervise packaging
- Prepare QA/QC and shipping document

Petrography

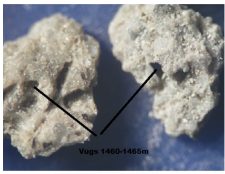
- Drill cuttings or core samples
- Mineralogy, modal composition, and textural relationships
- Facies recognition
- Porosity and its types
- Permeability



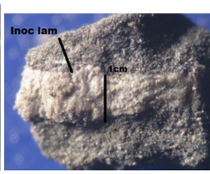
Halfway Mrkr



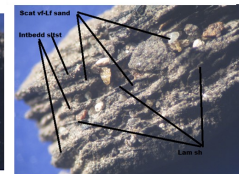
Phosphate nodules



LMST strags/Vugs Halfway



Calcite crystal 2600m

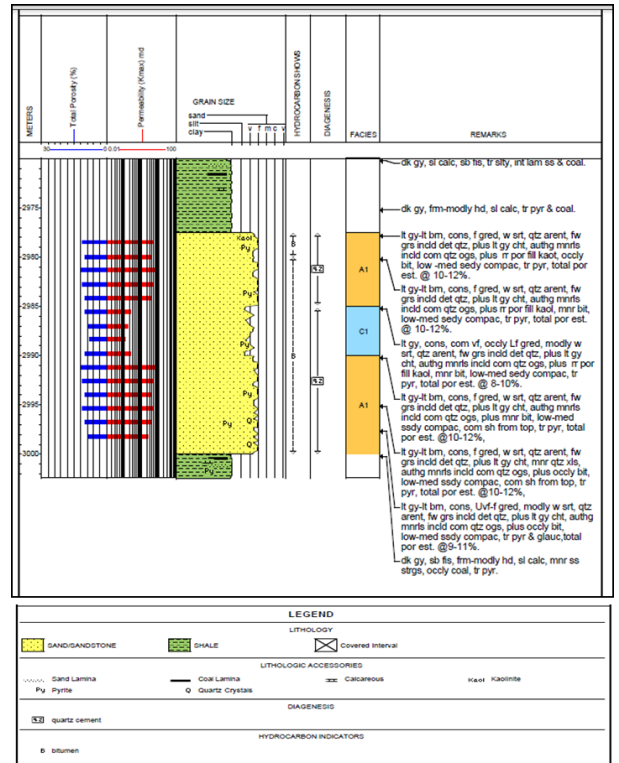


Montney Turbidite

Drill Cutting examination and interpretation with high quality digital microphotographs

Coring Supervision

- Pick core interval
- Confirm cut & recovered core
- Collect tube-ends samples and log lithology
- Label and supervise packaging
- Prepare QA/QC and shipping documents



Health Safety & Environment (HSE)

All consultants equipped with following certificates:

- ◇ H2S Alive
- ◇ First Aid
- ◇ TDG
- ◇ WHIMS
- ◇ Drug Test

4x4 vehicles, hard hat, goggles, rubber gloves, steel-toed boots, standard coveralls
 \$2 million Umbrella Policy and Travel policy
 Additional client's safety orientations
 Report and safely manage hazardous conditions
 Aware of and abide by all environmental law



YOUR EXPLORATION PARTNERS

PETRO-EXPLORERS INC.
 300, 840-6th Ave. SW Calgary
 Alberta T2P 3E5 Canada
 Off: +1 403.260.5395
 Fax: +1 403.265.3783
 info@petroexplorers.com